

INSPIRE LUXURY INCLUSIONS

*Live life*  
INSPIRED



**Hallmark  
Homes**

Where the heart is



# *Inspired luxury*

Immerse yourself in style and sophistication with our most luxurious collection of quality inclusions. If you enjoy the finer things in life and attention to detail is important to you, Inspire Luxury Inclusions will leave you spoilt for choice. Hallmark Homes has taken the utmost care in curating this stylish selection of premium inclusions for your dream home.













## **PREMIUM INCLUSIONS** *designed to* **IMPRESS.**

Inspire Luxury Inclusions take your new home to a whole new level.

Create the ultimate living experience with a stunning selection of high-quality inclusions that are thoughtfully combined to create the ultimate atmosphere in your new home. You'll love the impressive Lithostone kitchen benchtops, gorgeous German kitchen appliances, coupled with high-quality finishes, tapware and fittings throughout. By choosing Inspire Luxury Inclusions you'll create the home of your dreams.







# Create

## **SOPHISTICATED STYLE.**

The look and feel you create for your new home says a lot about you as a person. It reflects your personality and makes your home unique. With so many options available, making the right choices can be a little overwhelming. But never fear, we're here to help!

## **EXPERT GUIDANCE EVERY STEP OF THE WAY.**

Once you've decided on your new Hallmark home, the next exciting step is your one-on-one selection appointment at our dedicated customer selection centre. Select by Hallmark is where the vision for your new luxury home really comes alive. Together, we'll realise the vision for your new home. Our experienced consultants will guide you through the latest trends and colour selections to create a home as individual as you are.

## **AUSTRALIA'S LEADING BRANDS ALL IN ONE PLACE.**

At Select by Hallmark, we've cherry-picked the best of the best for you to choose from. So you can experience an extensive range of Australia's leading brands, all under one roof — from the latest cabinetry finishes, tapware and splashback options, to the finest quality appliances, bathroom vanities, flooring and much more.

## **YOUR HOME. YOUR WAY.**

You'll meet with your very own consultant, who will personally help you bring your dreams to life. They'll also ensure that everything you choose works together seamlessly, both inside and out.

Select by Hallmark is exclusive to Hallmark Homes' clients, by appointment only.

Welcome!



**Select**  
by Hallmark





# Site works

## CUT & FILL

Allowance included for up to 1m cut and 1m fill.

## CLEANING

- Builder's house clean (windows included).
- Building debris only removed from site upon completion.

## BUILDING APPLICATION & FEES

Includes the cost of Engineers soil test and structural foundation design, concrete pump, minimum sediment/erosion control, site inspections, contour survey, standard building certification, plumbing and drainage fees, waste levy, PLSLA levy fee, QBCC Insurance, and Contractors All-Risk Insurance.

Possible extra costs not allowed for and to be paid by the owner include, but are not limited to, the following: additional Council requirements, slab/footing piers, retaining walls, soil stabilisation and retention, rock excavation, tree removal, acoustic requirements, bushfire requirements, A.H.D. requirements, and sand/metal pipe bedding (if required by local authority).

## CONNECTIONS

Allowance made for connection to services of water, sewerage, stormwater and electricity, including 3 surface water grates.



# Sustainability

## WATER

- 280 litre heat pump standard (plan specific secondary hot water system to be 170L heat pump).
- All tapware and toilet to meet minimum WELS rating.

## INSULATION

- R3.0 Glasswool insulation batts to ceiling.
- Reflective foil wrap to external wall.
- R2.0 Glasswool insulation batts to all lightweight external walls.
- 2 no. whirlybird roof ventilators.
- 60mm Anticon blanket to roofs.

# Structural

## FOUNDATIONS & FLOOR

Engineer's Concrete slab system designed by QLD Soil Testing for "M" soil classification to AS2870 with brick rebate and exposed perimeter edge beam. No stepdown to Garage floor. 23lm allowance for slab/footing piers.

## TERMITE TREATMENT

Termite treatment to AS3660.1 (Section 6) including monolithic slab and physical barrier system to service penetrations and perimeter.

## FRAMING

H2 classification treated pine wall frames and trusses. Timber walls and ceiling framing lined with 10mm plasterboard.

## WIND RATING

Construction methods to suit N2 wind loading as per the Building Code of Australia.









# Kitchen

Create a luxurious look for your dream kitchen, with a superb selection of classic cabinetry, German appliances, designer tapware and premium finishes.

## CUPBOARDS

- Square edge door and drawer fronts with PVC edging and selected door handles from Builders Range.
- Overhead cupboards and microwave provision.
- Laminated Pantry unit (plan specific) (2400mm high) with four (4) shelves (complete with painted bulkheads to ceiling).
- 600mm wide cupboards with White melamine internal linings including one (1) intermediate shelf and a bank of four (4) drawers.
- Laminate colours in Polytec Smooth, Sheen, Matt, and Woodmatt finishes.

## SPLASH BACK

- Up to 710mm above all benchtops from standard Builders Range.
- Ceramic tiles from Builders Range.
- Fixed Glass Window Splash back plan specific.

## FRIDGE

- Convenient hassle free water connection to fridge space.
- Two door laminated 'push to open' overhead cupboards above fridge space for additional storage.





# Cutting-edge German kitchen appliances

THE CHOICE IS YOURS...

## OPTION ONE



### OVEN

Bosch 60cm Series 8  
Built In Oven Black  
(HBG7741B1A)



### COOKTOP

Bosch 60cm Series 6  
Induction Cooktop Black  
(PVS631HC1E)



### RANGEHOOD

Bosch 53cm Ducted  
Undermount Rangehood  
(DLN54AA70A)

## OPTION TWO



### OVEN

Bosch 90cm Series 6  
Pyrolytic Built-In-Oven  
Black (VBD578FB0)



### COOKTOP

Bosch 80cm Series 6  
Induction Cooktop Black  
(PVS831HC1E)



### RANGEHOOD

Bosch Series 8 Integrated  
Rangehood 86cm (Black)  
(DLN88PC60A)

## OPTION THREE



### FREESTANDING COOKER

Bosch 90cm Dual Fuel Upright  
Cooker with 8 Function Oven,  
6 Burners Stainless Steel  
(HSB738357A)



### RANGEHOOD

Bosch Series 8 Integrated  
Rangehood 86cm (Black)  
(DLN88PC60A)

## ALL OPTIONS INCLUDE A BOSCH DISHWASHER



### DISHWASHER

Bosch 60cm Series 2 Freestanding  
Dishwasher (SMS24AI01A).



# Lithostone benchtops

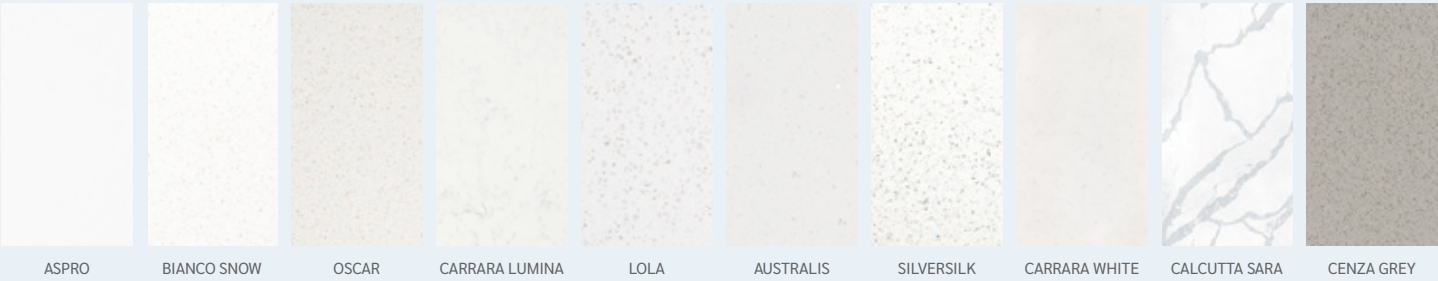
The preferred choice for many architects and designers, Lithostone benchtops will elevate the look and feel of your new kitchen. Boasting a sophisticated colour palette and choice of textured looks from soft mineral flecks to unique veining, Lithostone benchtops are a luxurious addition to any designer kitchen.





SPECIAL RANGE STONE COLOURS

LITHOSTONE  
SURFACES



OPTION  
TWO

LITHOSTONE 40MM THICK  
ISLAND BENCHTOP

40mm thick reconstituted stone on Island bench (up to 820mm wide from Builders and special range stone colours) with 20mm thick reconstituted stone (from Builders and special range stone colours) on rear cupboards.



# *Kitchen sinks & Sink mixers*

Choice of premium Gareth Ashton Sidelever mixers  
in either Black or Chrome (4K1 and 3K2).

GARETH ASHTON - LUCIA GOOSENECK 4K1



GARETH ASHTON - LUCIA 3K2



RFA200 DOUBLE BOWL OVERMOUNT SINK







Double bowl  
overmount sink





# Bathroom & Ensuite

Embrace the luxury and opulence of premium fittings and finishes, to create effortless style and beauty for your brand new bathroom and ensuite.

## WALL HUNG VANITY

'Lucca' wall hung Builders Range laminate finish or 2 Pac vanity unit with soft close drawer/s and a 20mm thick (from Builders and Special Range stone colours) reconstituted stone bench top with arrised edge profile.

## BASINS AND TAPWARE

Tina and Penny above counter basins with a choice of Vela, Poco and (Black or Chrome) basin and bath mixers.

## OVER BATH MIRROR

Up to 700mm micro framed mirror extending from vanity over bath as per plan.

## VANITY MIRROR

900mm high (nominal) micro framed mirrors to full width of vanity as per plan.

## OBSCURE GLASS

To bathroom, ensuite and W.C.

## SHOWER SCREEN

Semi frameless shower screen.

## WET AREA TILING

Ceramic wall and floor tiles from Builders Range.

## BATHROOM / ENSUITE TILING

- Nominal 2000mm to the shower alcove walls.
- 500mm over the bath and one (1) skirting row to the remainder.
- Fully tiled floor.

## W.C. TILING

- Nominal 200mm high of skirting tiles.
- Fully tiled floor.

## EXHAUST FAN

Standard to W.C. and bathroom where there is no window present.

## FLOOR WASTE

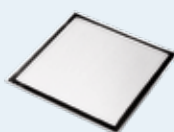
Tile insert floor waste.



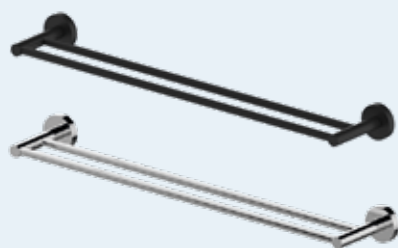


#### TOILET ROLL HOLDER

Gareth Ashton Poco Toilet roll holder (Black or Chrome).



#### TILE INSERT FLOOR WASTE



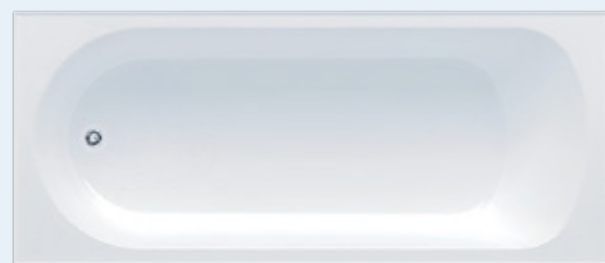
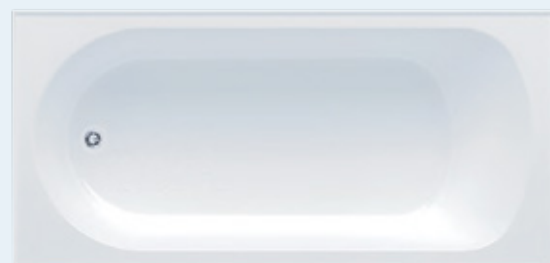
#### DOUBLE TOWEL RAILS

Gareth Ashton Poco Double Towel Rail 760mm (Black or Chrome).



#### TOILET SUITES

Seima Modia wall faced with classic seat.



#### BATHROOM BATH

1525mm Tondo inset bath to Main, and 1675mm Tondo Island to Ensuite (plan specific).



# Bathroom & Ensuite tapware

Choice of premium Gareth Ashton tapware in either Black or Chrome.

VELA BASIN MIXER



VELA SHOWER MIXER



POCO BASIN MIXER



POCO SHOWER MIXER



RAIL SHOWER









# Laundry

The luxury level of inclusions continues through to the laundry. Meeting the practical needs of you and your family, without sacrificing style.

## LAUNDRY CABINET

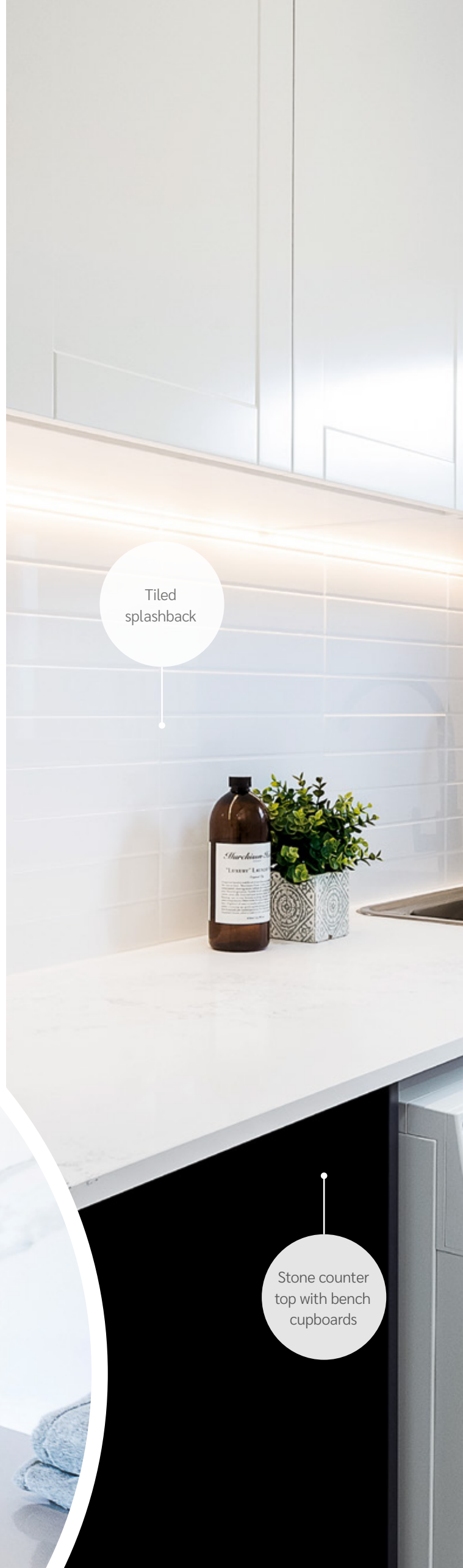
- 900mm laundry bench with square edge door fronts with PVC Edging, 45L Stainless steel drop in tub and door handles with Stone top (all selected from Builders Range and Special Range). White melamine internal linings including one (1) intermediate shelf.
- Laundry cabinet stone - choice between Builders Range and Special Range Lithostone colour range.
- Laminate colours in Polytec Smooth, Matt, Sheen, and Woodmatt finishes.

## TAPWARE

Choice of Premium Gareth Ashton Sidelever Mixer - Black or Chrome (3K2 and 4K1).

## TILING


- Ceramic wall and floor tiles from Builders Range.
- Tiled Splashback up to 600mm above all benchtop.
- Fully tiled floor.



Tiled splashback

Stone counter top with bench cupboards





Choice of  
premium laundry  
mixers

# Storage

Storage spaces have been thoughtfully designed to seamlessly blend with your luxury décor. Choose from a superb selection of colours and finishes to bring it all together beautifully.

## WARDROBES

- Aluminium framed sliding doors with coloured vinyl fronts (colours from Builders range), overhead melamine shelf (white) and chrome hanging rail to all bedrooms.
- Walk in robe to Bedroom 1 with Corinthian flush primed door (where applicable), overhead melamine shelf (white) and chrome hanging rail.

## LINEN CUPBOARD

- Plan specific: Aluminium framed sliding doors with coloured vinyl fronts (colours from Builders Range).
- Four (4) melamine shelves in White.

Photography is for illustrative purposes only and may feature non-standard items that are not included in the Inspire Inclusions Range. Decorative items such as furniture, homewares and some appliances are not included. Pricing, materials, suppliers and specifications may be subject to change without notice. This brochure is a guide only. Please refer to your contract for all final inclusions.



# Doors

Set the scene for your new home by choosing the perfect combination of statement entry doors, quality internal doors and sleek, stylish handles from our carefully curated selection.

### EXTERNAL DOOR

Corinthian 820mm glazed paint grade front entry door (gloss acrylic) from Inspire Range.

### EXTERNAL ENTRY HANDLE

Oxford Touch Plus Entrance Set (Matte Black, Polished Chrome or Satin Chrome).

### INTERNAL DOORS

Internal Corinthian flush primed range, Motive range, and Impressions range.

### INTERNAL DOOR HANDLES

Avalon internal door handles and deadlocks to garage internal door (Chrome or Matte Black).

### DOOR STOPS

Sphere magnetic door stops (PC T0638) to all internal doors.

### EXTERNAL ENTRY HANDLES



OXFORD TOUCH PLUS  
POLISHED CHROME



OXFORD TOUCH PLUS  
SATIN CHROME



OXFORD TOUCH PLUS  
MATTE BLACK

### INTERNAL DOOR HANDLES



AVALON MATTE CHROME

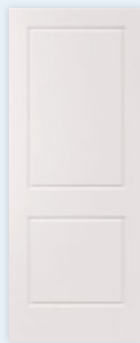


AVALON MATTE BLACK

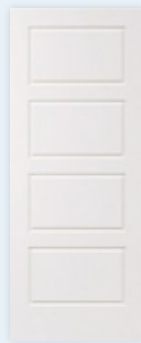
### EXTERNAL DOORS



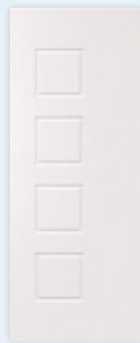
PURB 01



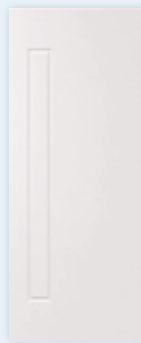
PURB 02



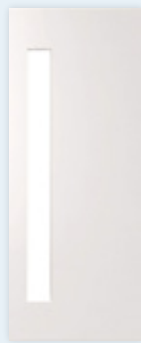
PURB 4



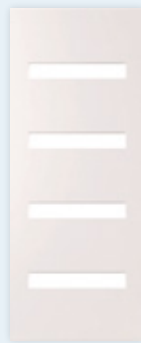
PURB 04



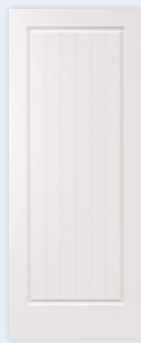
PURB 101



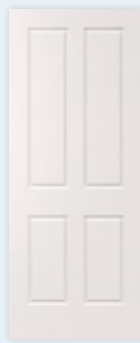
PMAD101



PMAD104



PSC 1

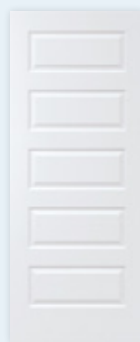


PSC 4

### INTERNAL DOORS



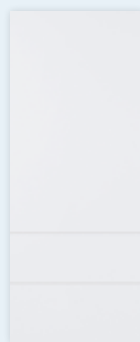
STA



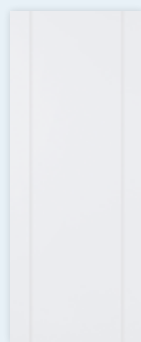
ROC



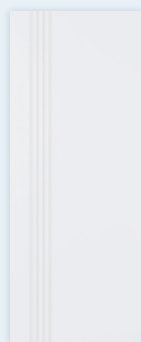
CMB



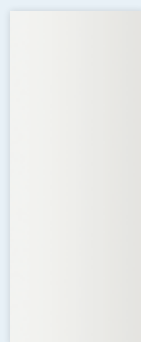
MOTP 2



MOTP 2V



MOTP 3D



PMDF



# Electrical

We take care of the finer details, so you don't have to – ensuring that your new home meets the highest electrical standards, complete with a premium selection of lighting, ceiling fans, switches and power points.

## INTERNAL LIGHT POINTS

- Energy saver lamps and batten holder fittings installed to 100% of the floor area

## EXTERNAL LIGHT POINTS

- Ceiling fan with light combination to alfresco.
- Batten holder and bulb to external of laundry and front door/porch.

## EXHAUST FANS

Externally ducted exhaust fans (where required for NCC compliance).

## SWITCHES & POWER POINTS

- Hager Allure accessories throughout in choice of Matte Black or Matte White.
- Ample double power points throughout.
- One USB power point allowance.

## TV POINT

Two (2) television points.

## SMOKE DETECTORS

Hardwired smoke detectors throughout (compliant with legislation).

## CIRCUIT BREAKERS

Automatic circuit breakers with earth leakage safety switches to meter box.

## UNDERGROUND CONNECTION

Underground connection (80-amp single phase) from main supply point to meter box (allowance of 10lm).

## NATIONAL BROADBAND NETWORK

NBN pre-wire including one (1) data point and one (1) Network data point.



# Plumbing

## SEWER

50 lineal metres of sewer drains allowed as standard.

## STORMWATER

90 lineal metres of stormwater drains allowed as standard.

## COLD WATER

10 lineal metres allowed to connect from existing water meter to house.

## GARDEN TAPS

Front and rear garden tap included.





#### Additional ceiling height

Enjoy additional ceiling space with 2590 high ceiling on our single-storey homes.

3x coats of paint to all walls

# Interiors

At Hallmark, we appreciate the importance of attention to detail. Premium paintwork and many other high-quality interior inclusions take your home to a new level.

#### CEILING PAINT

Builders Range flat acrylic in White.

#### DOORS & WOODWORK PAINT

Gloss acrylic to all internal doors and woodwork.

#### CEILINGS

2590mm ceiling heights.

#### SKIRTINGS

68mm x 12mm Splayed, Classic, Pencil Round or Double Pencil Round profile (MDF) for painting.

#### ARCHITRAVES

42mm x 12mm Splayed, Classic, Pencil Round or Double Pencil Round profile (MDF) for painting.

#### COVE CORNICES

75mm throughout.



# Roof, Windows & Garage

Create the ultimate street appeal for your new home with a selection of high-quality external building components and materials, including a contemporary range of Colorbond® steel colours for your roof and garage door.

## FASCIA & GUTTER

Colorbond® metal fascia, quad gutter and 90mm round PVC downpipes.

## GARAGE DOOR

Modern garage door (choose between: standard, premium or matt colours) utilising all Colorbond® colours (excluding deco wood).

## OUTDOOR LIVING

Covered Alfresco slab with brick pier and broom finished concrete.

## WINDOWS & SLIDING DOORS

- Powder coated aluminium clear glazed sliding windows and alfresco sliding/stacker door (as applicable). Colours from Builders Range. Locks to all opening windows and sliding/stacking doors.

## ROOF

Colorbond® steel roof from Builders Range with 60mm Anticon blanket.

## GARAGE DOOR COLOURS

				
DOVER WHITE™	SURFMIST®	EVENING HAZE®	CLASSIC CREAM™	PAPERBARK®
				
SHALE GREY™	DUNE®	COVE®	PALE EUCALYPT®	WOODLAND GREY®
				
WINDSPRAY®	GULLY®	MANGROVE®	DEEP OCEAN®	COTTAGE GREEN®
				
WALLABY®	JASPER®	BASALT®	MANOR RED®	NIGHT SKY®
				
IRONSTONE®	TERRAIN®	MONUMENT®	BLUE GUM®	SOUTHERLY®

Colorbond®



Photography is for illustrative purposes only and may feature non-standard items that are not included in the Inspire Inclusions Range. Decorative items such as furniture, homewares and some appliances are not included. Pricing, materials, suppliers and specifications may be subject to change without notice. This brochure is a guide only. Please refer to your contract for all final inclusions.



# Walls

## INTERNAL WALLS

Internal linings: 1 x 4 lineal metre  
HardieGroove™ VJ panel feature wall.

## WALL PAINT

- One (1) sealer coat, two (2) coats of washable premium acrylic Taubmans Endure to all walls.
- One (1) colour to internal walls allowed, same colour gloss acrylic to all internal doors and woodwork.

## EXTERNAL WALLS

Single height clay bricks from Builders Range. Natural ironed mortar joints.

## EXTERNAL PAINTING

Gloss acrylic to external woodwork, meter box and downpipes.

HardieGroove™  
VJ feature wall







# Inspire Inclusions

We’ve made it easy to know exactly what’s included in your new home, by listing it all right here for you. If there’s anything you’re not sure about, just ask our friendly team!

## GENERAL

Prices are based on ‘M’ class fully serviced sites. Includes the cost of Engineers soil test and structural foundation design, concrete pump, minimum sediment/erosion control, site inspections, contour survey, standard building certification, plumbing and drainage fees, waste levy, PLSLA levy fee, QBCC Insurance and Contractors All-Risk Insurance. Construction methods to suit N2 wind loading as per the Building Code of Australia. Allowance included for up to 1m cut and 1m fill. Possible extra costs not allowed for and to be paid by the Owner include, but are not limited to, the following: additional Council requirements, slab/footing piers, retaining walls, soil stabilisation and retention, rock excavation, tree removal, acoustic requirements, bushfire requirements, A.H.D. requirements, and sand/metal pipe bedding (if required by local authority).

## ACCESS

Accessibility to the building site is the responsibility of the owner. Any costs incurred by the Builder due to difficult site access, including crane hire and hand carting of materials, to be paid by the owner.

## TERMITE TREATMENT

Termite treatment to AS3660.1 (Section 6) including monolithic slab and physical barrier system to service penetrations and perimeter.

## FOUNDATIONS & FLOOR

Engineer’s Concrete slab system designed by QLD Soil Testing for “M” soil classification to AS2870 with brick rebate and exposed perimeter edge beam. No stepdown to Garage floor. 23lm allowance for slab/footing piers.

## EXTERNAL WALLS

Single height clay bricks from Builders Range. Natural ironed mortar joints.

## INTERNAL WALLS

H2 classification treated pine wall frames and trusses. Timber walls and ceiling framing lined with 10mm plasterboard.

## CEILING HEIGHTS

2590mm ceiling heights.

## INSULATION

R3.0 Glasswool insulation batts to ceiling. Reflective foil wrap to external walls. R2.0 Glasswool insulation batts to all lightweight external walls.

## FASCIA & GUTTER

Colorbond® metal fascia, quad gutter and 90mm round PVC downpipes.

## HIP ROOF

Colorbond® steel roof from Builders Range with 60mm Anticon blanket at 23.5° pitch with 450mm wide eaves. 2 no. whirlybird roof ventilators.

## WINDOW AND SLIDING DOORS

Powder coated aluminium clear glazed sliding windows and patio sliding/stacker doors (as applicable). Colours from builders range. Locks to all opening windows and sliding doors.

## MOULDINGS

Skirtings	68mm x 12mm Splayed, Classic, Pencil Round or Double Pencil Round profile (MDF) for painting.
Architraves	42mm x 12mm Splayed, Classic, Pencil Round or Double Pencil Round profile (MDF) for painting.

## DOORS

Internal	Internal Corinthian flush primed range, Motive range, and Impressions range.
External	Corinthian 820mm wide glazed paint grade front entry door from Inspire Range.

## DOOR FURNITURE

Internal	Avalon internal door handles and deadlocks to garage internal door - Matte Chrome or Matte Black
External	Lane Oxford Touch Plus Entrance Set - Matte Black, Polished Chrome or Satin Chrome.
Garage	Deadlocks to garage internal door (Chrome or Matte Black).

## KITCHEN FITTINGS

Cupboards	Square edge door and drawer fronts with PVC edging and selected door handles (from Builders Range). 600mm wide cupboard with overhead cupboards. White melamine internal linings including one (1) intermediate shelf and a bank four (4) drawers. A microwave space provision. Pantry unit with White melamine shelves OR Walk-In Pantry with four (4) White melamine shelves (plan specific). Laminate colours in Polytec Smooth, Sheen, Matt, and Woodmatt finishes.
Fridge Space	Two door laminated ‘push to open’ overhead cupboards above fridge space for additional storage.
Pantry Shelves	Laminated Pantry unit (plan specific) (2400mm high) with four (4) shelves (complete with painted bulkheads to ceiling).
Benchtops	Choose from Builders Range and Special Range Lithostone colour range.  <b>Option 1</b> - 20mm thick reconstituted stone (from Builders Range and Special Range) with a reconstituted stone waterfall gable with Mitred Joint (up to 2 gables - maximum 820mm wide).  <b>Option 2</b> - 40mm thick reconstituted stone on Island bench (up to 820mm wide from Builders Range and Special Range) with 20mm thick reconstituted stone (from Builders Range) on rear cupboards.
Sink	A choice of quality RFA2000 double bowl undermount or overmount.
Tapware	Choice of Premium Gareth Ashton Square Sidelever Mixer - Black or Chrome (3K2 and 4K1).

## KITCHEN APPLIANCES

Option 1	Bosch 60cm Series 8 Built In Oven (Black) (HBG7741B1A), Bosch 60cm Series 6 Induction Cooktop (Black) (PVS631HC1E), Bosch 53cm Ducted Undermount Rangehood (DLN54AA70A), Bosch 60cm Series 2 Freestanding Dishwasher (SMS24AI01A).
Option 2	Bosch 90cm Series 6 Pyrolytic Built-In-Oven (Black) (VBD578FB0), Bosch 80cm Series 6 Induction Cooktop (Black) (PVS831HC1E), Bosch Series 8 Integrated Rangehood 86cm (Black) (DLN88PC60A), Bosch 60cm Series 2 Freestanding Dishwasher (SMS24AI01A).
Option 3	Bosch 90cm Dual Fuel Upright Cooker with 8 Function Oven, 6 Burners (Stainless Steel) (HSB738357A), Bosch Series 8 Integrated Rangehood 86cm (Black) (DLN88PC60A), Bosch 60cm Series 2 Freestanding Dishwasher (SMS24AI01A).

IMPORTANT NOTE: Prices exclude the cost of floor coverings, curtains or blinds, light fittings, prints, decorator items, painted feature walls, feature tiling to wet areas, tiling to living areas, patios and front porches, decorative posts and external bagging/rendering and painting to remainder of homes, fencing, retaining walls, landscaping, watering systems, paving, pergolas, air conditioning, additional telephone or data points, security alarms, water tanks and on-site sewage treatment systems unless specified by way of variation. Inclusions may vary according to your chosen home design. The Company reserves the right to alter its plans, specifications and prices without notice. QBCC Licence 23846.





**BATHROOM & ENSUITE FITTINGS**

Bath	1525mm Tondo inset bath to Main, and 1675mm Tondo Island to Ensuite (plan specific).
Shower and Shower Screen	Rail Shower - Main Bathroom & Ensuite Gareth Ashton rail shower (SRA011) (Black or Chrome). Semi Frameless shower screen.
Vanity Units	‘Lucca’ wall hung Builders Range laminate finish or 2 Pac vanity unit with soft close drawer/s and a 20mm thick (from Builders and Special Range stone colours) reconstituted stone bench top with arrised edge profile.
Tapware	Choice of Premium Gareth Ashton tapware in either Black or Chrome. Basin Mixer - Vela Basin, Poco Basin. Shower Mixer - Vela Shower, Poco Shower. Bath mixer and Spout - Vella, Poco.
Vanity Mirror	900mm high (nominal) micro framed mirrors to full width of vanity as per plan.
Towel Rails	Gareth Ashton Poco Double Towel Rail - Black or Chrome.

**W.C. FITTINGS**

Toilet Suites	Seima Modia wall faced with classic seat - White.
Toilet Roll Holder	Gareth Ashton Poco toilet roll holder - Black or Chrome.

**LAUNDRY FITTINGS**

Cabinet	900mm laundry bench with square edge door fronts with PVC Edging, 45L Stainless steel drop in tub and door handles with Stone top (all selected from Builders Range and Special Range colours). White melamine internal linings including one (1) intermediate shelf.  <b>Laundry cabinet stone:</b> Choice of standard and special selection Lithostone colour range.  <b>Laminate colours:</b> Laminate colours in Polytec Smooth, Matt, Sheen, and Woodmatt finishes.
Tapware	Choice of Premium Gareth Ashton Square Sidelever Mixer - Black or Chrome (3K2 and 4K1).

**TILING**

Wet area	Ceramic wall and floor tiles from Builders Range.
Kitchen	Up to 710mm above all benchtops. Floor tiles NOT included.
Bathroom/ Ensuite	Nominal 2000mm to the shower alcove walls. 500mm over the bath and one (1) skirting row the remainder. Fully tiled floor.
Laundry	Up to 600mm over the benchtop and one (1) skirting tile to remainder. Fully tiled floor.
W.C.	Nominal 200mm high skirting tiles. Fully tiled floor.

**WARDROBES**

Aluminium framed sliding doors with mirrored fronts, overhead melamine shelf (White) and hanging rail to all bedrooms (colours from Builders Range). Walk-in robe to Bedroom 1 with Corinthian hinged door (where applicable), overhead melamine shelf (White) and hanging rail.

**LINEN CUPBOARD**

Aluminium framed sliding doors with coloured vinyl fronts (colours from Builders Range) and four (4) melamine shelves in White (where applicable).

**INTERNAL LININGS**

1 x 4LM VJ panel feature wall.

**HOT WATER SERVICE**

Heat pump (280 litre) (plan specific secondary hot water system to be 170L heat pump).

**PLUMBING & DRAINAGE**

Cold Water	10 lineal metres allowed to connect from existing water meter to house. Front and rear garden tap included.
Sewer	50 lineal metres of sewer drains allowed as standard.
Stormwater	90 lineal metres of stormwater drains allowed as standard.

**ELECTRICAL**

Ample light points and double power points throughout, including one (1) Hager USB integrated Power point. Energy saver lamps and batten holder fittings installed to 100% of the floor area. Two (2) TV points. Automatic circuit breakers with earth leakage safety switches to meter box. Hager Allure accessories throughout in choice of Matte Black or Matte White. Underground connection (80-amp single phase) from main supply point to meter box (allowance of 10lm). Smoke detectors to government requirements. Ceiling fan with light combination to alfresco.

**NATIONAL BROADBAND NETWORK**

NBN pre-wire including one (1) data point and one (1) network data point.

**PAINTING**

External	Gloss acrylic to external woodwork, meter box and downpipes.
Internal	Builders Range flat acrylic in White to ceilings. One (1) sealer coat, two (2) coats of washable premium acrylic Taubmans Endure to all walls. One (1) colour to internal walls as standard. Same colour gloss acrylic to all internal doors and woodwork.

**GARAGE DOOR**

Modern garage door (choose between - standard, premium or matt colours) utilising all Colorbond colours (excluding deco wood).

**CLEANING**

Builder’s house clean (windows included). Building debris only removed from site on completion.

Photography is for illustrative purposes only and may feature non-standard items that are not included in the Inspire Inclusions Range. Decorative items such as furniture, homewares and some appliances are not included. Pricing, materials, suppliers and specifications may be subject to change without notice. This brochure is a guide only. Please refer to your contract for all final inclusions.



# Suppliers

We're proud to work alongside many of Australia's most trusted brands and suppliers, to deliver a quality home you'll be proud to call your own.

**Abey<sup>au</sup>**

**Andersens**  
THE RESPECTED NAME IN FLOOR COVERINGS

**australbricks®**  
SINCE 1908

 **BOSCH**

 **Bradford™**

 **Bradnam's**  
windows & doors

**Chromagen™**  
Solar & Energy Solutions

**Colorbond®**

 **CORINTHIAN**  
DOORS

**CSR**

**Timbertruss** 

**dynamic bradview**  
ROOFING

**DYNAMIC™**  
DOOR SERVICE

 **easycraft.**

 **EnergyAIR**

**HNC** | HARVEY NORMAN  
COMMERCIAL QLD

**kNAUF**

**LANE**  
SECURITY · STYLE · FUNCTION

**LITHOSTONE**  
SURFACES

 **national tiles**

 **NEUMANN STEEL**  
REINFORCING

 **PGH** **BRICKS & PAVERS™**

**polytec**

**PPM**  
PROTECTANT  
PEST MANAGEMENT

 **TAUBMANS™**

 **Taylex**  
WASTEWATER







# WE ARE HERE *for you*

Your home is at the heart of everything you do.

It's where you celebrate life, love and togetherness. It's also where you kick back, relax and soak up the sunshine with friends and family.

You need a builder who has your best interests at heart. From helping you choose the perfect design to handing over the keys to your dream home, our friendly team will be here to support you every step of the way.

That's the Hallmark way.

[HALLMARKHOMES.COM.AU](https://hallmarkhomes.com.au)

1300 326 515



**Hallmark  
Homes**

Where the heart is